



• QUALITY STONE SPECIALISTS SINCE 1881 •



• MARBLE • TERRAZZO • GRANITE •

# COMPANY HISTORY

Innovation, quality, choice and craftsmanship are the cornerstones we work with to produce unique, hand-crafted stone solutions to meet the individual needs of every client.

Diespeker has been in business since 1881 as a specialist supplier of natural stone and man-made materials for flooring, tiles, cladding, worktops and treads.



Founded by Italian entrepreneur Luigi Oderico in Hamburg, the business later expanded to London, supplying terrazzo, mosaic, marble, granite and slate to the UK market.

Since then we have grown into a refined operation with skilled craftsmen, the latest Italian machinery and consummate experience in cutting, processing and polishing. Our full service comprises site surveys, technical support, drawings, supply and installation, together with exceptional aftercare.

Alongside standard materials, Diespeker offers a rare provision at our purpose-built factory in South East London, making bespoke terrazzo using traditional hand casting skills honed over many years.

Our impressive on-site showroom exhibits a range of 700 options, making it one of the most comprehensive displays in the UK. You are welcome to browse the showroom and see what happens at our factory.

**We believe our products add finesse to any project and boast amongst our clients the Royal Albert Hall, Waldorf Hotel, Planet Hollywood, Wimbledon Tennis Club, Lloyds of London and Fischer's of Marylebone.**



## MARBLE, GRANITE, SLATE and STONE

Marble is one of the very best materials for durability, retaining its attractive finish with minimal maintenance. A natural metamorphic rock, marble is soft enough to work with hand tools and is available in a wonderful array of colours to match design requirements. It is ideal for internal use.



## TERRAZZO

Terrazzo is another extremely durable material and is an ideal option for heavy use, like internal and external flooring, cladding, kitchen and vanity tops. We stock a wide range of standard colours or, if you prefer, we can create a unique composition to your precise specification using hand casting methods.



*Diespeker & Co*

Quality stone specialists since 1881, experts in marble, terrazzo, granite, slate and stone, with locations in London and Italy.

T: 020 7358 0160 E: [sales@diespeker.co.uk](mailto:sales@diespeker.co.uk) W: [diespeker.co.uk](http://diespeker.co.uk)

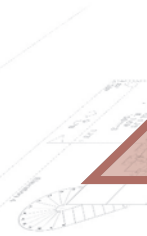
## SHOWROOM

Spread across two floors and covering over 100 square metres, our exclusive showroom displays more than 700 different panels exhibiting both the standard and bespoke stone work we supply and install. We also have more than 10,000 different samples of stone for customers to view and take away.



## OFFICES

We welcome visitors to our modern offices located just a few minutes from Tower Bridge. With an office staff of 10, and 35 artisan masons, stone fabricators and fitters, you will find the best person to advise you. Our experienced team members are always pleased to show you around.



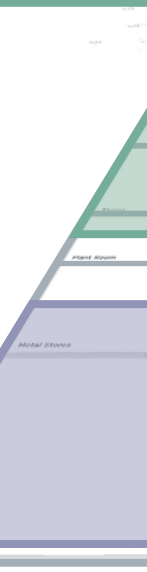
## STOCK

Whilst most of the natural stone we supply is sourced and procured direct from our international suppliers, we also hold a large supply of stone in stock, stored in 900 square metres of storage yard: over 500 crates of cut-to-size marble and 3,000 slabs of terrazzo, marble, slate and granite.

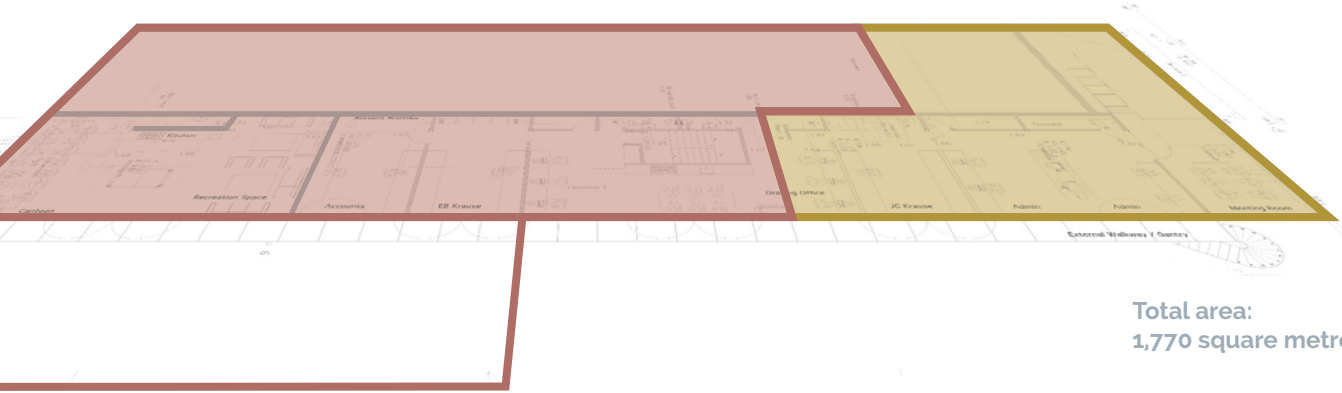


## MACHINERY

Our latest addition is a state-of-the-art overhead gantry crane on rails. With the capacity to lift up to 5-tonne weights, this enables us to unload the regular deliveries received on 12 metre trailers from our suppliers in Italy. This is in addition to our state-of-the-art cutting and processing machinery.



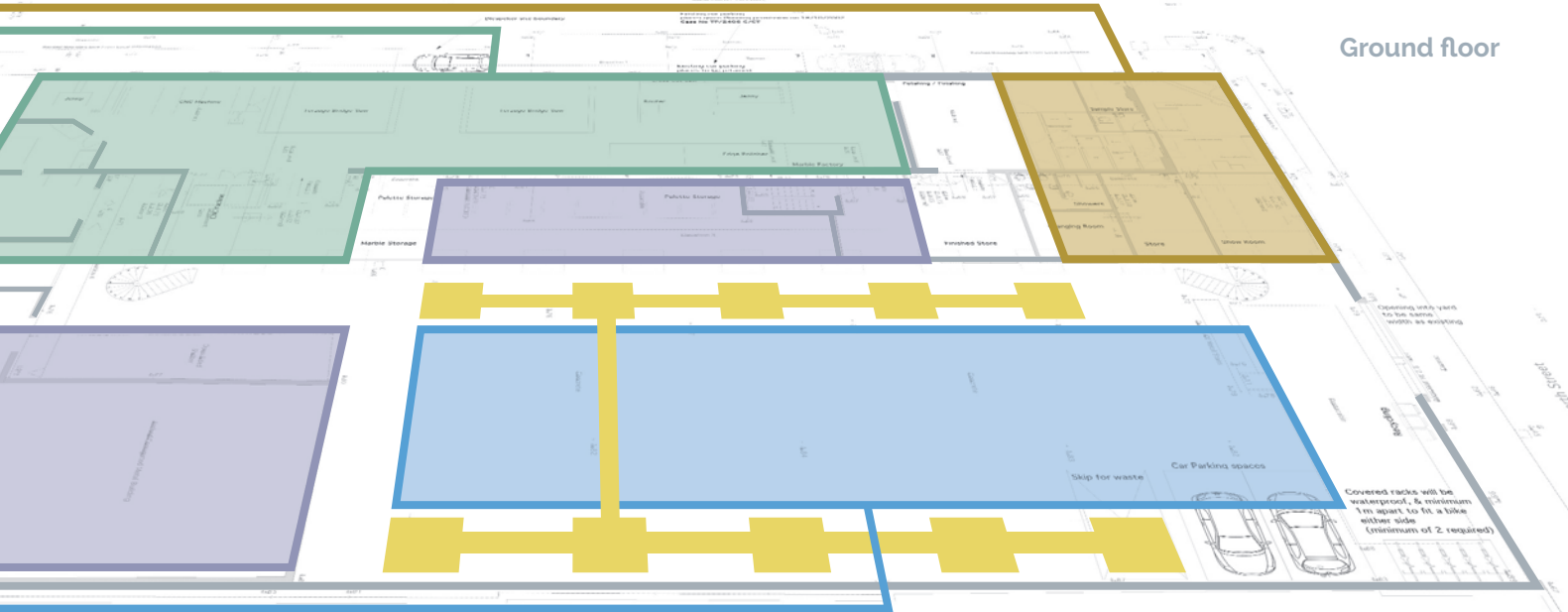
First floor



Total area:  
1,770 square metres



Ground floor



# Diespeker & Co

132-136 Ormside Street, London SE15 1TF

T: 020 7358 0160

E: [sales@diespeker.co.uk](mailto:sales@diespeker.co.uk)

W: [www.diespeker.co.uk](http://www.diespeker.co.uk)

## Opening hours

Monday to Friday 8.00am to 4.30pm

## How to find us

Diespeker and Co. is situated just off South London's Old Kent Road, less than two miles away from Tower Bridge. Our nearest National Rail station is South Bermondsey, a 5 minute walk away or if you are coming by London Overground, the nearest stop is Surrey Quays just one mile away.

